

# IMAGE-AVERAGING IN THE ANALYSIS OF DATA FROM PRESSURE-SENSITIVE FILM

by A.B. Liggins and J.B. Finlay

**Fuji Prescale** pressure-sensitive film (Fuji Photo Film Co., Ltd., Tokyo, Japan) allows pressures between 0.2 and 130 MPa to be recorded, using five film grades (ultra-super-low, super-low, low, medium and high); each grade covers a different pressure range. With the exception of high-grade film, Fuji film is supplied in two sheets (the A- and C-films); interface pressure causes fluids to be released from microscopic bubbles on the surface of the A-film, which react with an active layer on the surface of the C-film to produce a pink stain.<sup>1,2</sup> For high-grade film, the A- and C-film materials are superimposed on the surface of a single sheet. For pressures between the upper and lower threshold-values, the optical density response of the film can be calibrated with respect to the applied pressure.<sup>1,2</sup> It should be noted that the optical-density response of Fuji film is also temperature-, humidity- and load-rate dependent; these factors have been discussed previously.<sup>2</sup>

The manufacturer provides calibration charts and color-samples, which can be used to convert optical-density readings into pressure; these readings are made either visually, or via an (optional) optical densitometer (article# FPD 301). The limitations of this approach<sup>1</sup> have prompted the development of digital imaging techniques, both to calibrate Fuji film response (for temperature, humidity and load-rate effects) and then to convert subsequent test-stains into full-field pressure-maps.<sup>1,3-6</sup>

In our previously described technique,<sup>1,6</sup> 25.4-mm-diameter calibration stains are produced between two finely ground, hardened-steel surfaces. Loads are applied using an MTS 858 Bionix universal testing machine (MTS Systems Corporation, Eden Prairie, MN) giving a one-minute linear ( $\pm 0.1\%$ ) ramp up to full load, followed by a one minute hold at that load ( $\pm 1$  N, i.e.  $\pm 2$  kPa applied-pressure) and a one-minute linear ramp down to the original (10 N) pre-load. Following the subsequent experimental procedure for obtaining test stains from an interface of interest, a digital image of each (calibration and test) stain is captured via a CCD video camera and a 'PC' computer running ImagePro Plus software (Media Cybernetics, Silver Spring, MD). This approach results in grey-scale images consisting of 0.1-mm-wide  $\times$  0.08-mm-high pixels, each having a value between 0 (representing 'black') and 255 (representing 'white');<sup>6</sup> data from the calibration stains are used to produce a fifth-order polynomial relationship between pixel-value and applied-pressure.<sup>1,6</sup>

To produce a false-color pressure map from the test stains, the working pressure range (between the upper- and lower-thresholds of pressure response) is divided into a number of

pressure intervals;<sup>1,6</sup> each of these intervals is given a unique representative color. For each pixel on a test-stain image, its value is used (via the fifth-order calibration relationship) to determine the pressure at that point; the pixel is then rewritten to the color corresponding to the pressure interval within which the calculated pressure lies.<sup>1,6</sup>

The object of this study was to quantify the effects of an image-enhancement protocol on the resolution properties of pressure maps produced in this manner.

## RESOLUTION PROPERTIES OF PRESSURE MAPS

The burst-bubble mechanism used by Fuji film results in stains composed of discrete patches of red coloration (Fig. 1);<sup>7</sup> consequently, calibration-stain images consist of a range of pixel values, representing the single pressure at which the stain was obtained. As a result, there is a limit to the number of meaningful pressure intervals that can be represented on any pressure map.<sup>6</sup> A previous study analyzed groups of six calibration stains taken at each of four nominal pressures across the working range of super-low Fuji film.<sup>6</sup> It was found that a practical definition of pressure intervals could be determined from  $M_0 \pm S_p$ , where  $M_0$  was the overall mean pixel value for a group of six calibration stains and  $S_p$  was the pooled standard deviation for that population.<sup>8</sup> Applying the fifth-order calibration relationship<sup>1</sup> to this range of pixel values resulted in the characteristic pressure range  $R_p$ , for each population; the values of  $R_p$  were subsequently used to define the size of valid pressure intervals across the working pressure range of the film. From this definition, reducing  $S_p$  would result in a reduction in  $R_p$ , and hence produce a finer pressure interval; thus, pressure resolution would increase due to an increased number of pressure intervals which could fit within the film's working pressure range. It was shown that this effect could be achieved by increasing the sample area size used to acquire pixel-value data across the stain image.<sup>6</sup> Therefore, it was concluded that the production of false-color pressure maps is a compromise between pressure and spatial resolution. One-pixel square (0.1-mm wide  $\times$  0.08-mm high) sample areas only provided four identifiable pressure intervals across the valid pressure range of super-low film;<sup>6</sup> hence, when used in this manner, Fuji film appeared to be of limited use for small contact areas, or those subjected to high pressure gradients.

## IMAGE AVERAGING

A standard image-enhancement technique for noisy images is to define the value of each pixel on a resultant image as being the average value obtained from corresponding pixels on several positionally registered (noisy) images of the same object;<sup>9</sup> as the number of constituent-images increases, the effect of noise approaches zero, such that a 'clean' image is created. Similarly, it can be envisaged that this 'image-averaging' method would reduce the effect of the random granularity observed on Fuji film stains (Fig. 1), thereby reducing  $S_p$  (see above) and increasing pressure resolution, for any given spatial resolution.<sup>6</sup>

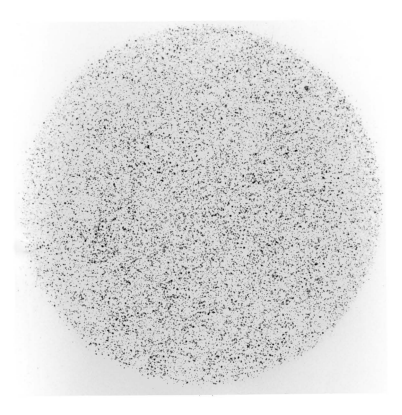


Fig. 1—A typical 25.4-mm-diameter Fuji film calibration stain, produced at 1.0 MPa

Hale and Brown<sup>7</sup> demonstrated that averaging data from a number of transverse contact-stress profiles (each representing the same one-dimensional stress distribution) will result in a noticeable reduction in noise caused by pixel-value fluctuations; however, the degree of data enhancement was not quantified. In addition, preliminary (qualitative) results from Liggins *et al.*<sup>10</sup> have shown that full-field (i.e. two-dimensional) image-averaging will reduce the effects of random stain-disruption caused by sealing Fuji film to prevent fluid damage.

Consequently, the following work was conducted to quantify the fifth-order effects of image addition on pressure resolution, in terms of the number of valid pressure intervals (colors) which could be used for a subsequent false-color pressure map.<sup>6</sup>

## EXPERIMENTAL PROCEDURE

Twelve standard calibration stains were produced from super-low Fuji film, at pressures between 0.26 and 2.97 MPa, using the method described in the introduction.<sup>1,6</sup> Six 'test' calibration stains (i.e., identical to standard calibration stains) were then obtained for each of four nominal pressures (0.5, 1.0, 1.77 and 2.5 MPa), using the same loading protocol; for each pressure, the corresponding stains were each given a reference number from one to six. Following a 50-hour 'development period',<sup>2</sup> a digital image of each stain was captured as described above.<sup>1,2,6</sup> The 12 calibration-stain images provided data for the calculation of a fifth-order relationship between pressure and pixel-value, using SigmaPlot software (Jandel Scientific, Corte Madera, CA). The remaining test stains were subjected to the following protocol.

A 190-pixel-square 'area of interest' (AOI) was defined within each stain; this size of AOI corresponded with that used for both obtaining data from calibration-stains<sup>1</sup> and for previous investigations of Fuji film properties.<sup>9,10,11</sup> A previously described, custom-written, computer program<sup>6</sup> was used to read the value of each pixel within the AOI and store these data to a file. A simple random-number generator, written in Quick Basic (Microsoft Corporation, Redmond, WA) was used to determine the order of

file combination. For each set of six stains (i.e., at each of the four nominal pressures), six groups of stain reference numbers were chosen; each group consisted of five (different) numbers between one and six, indicating the order of addition of the corresponding data files (Fig. 2). A second computer program was custom written in the 'C' programming language to combine and average the pixel values within the data files, according to these groups of random numbers. If  $N$  was the number of images to be combined, then the program loaded the data files corresponding to the first  $N$  numbers within the given group of five (Fig. 2); as data within these files were traversed, the  $N$  pixel values corresponding to a given spatial position (on the image) were added and the result divided by  $N$ , prior to being stored in a new data file. Once the new data file was complete, a mean and standard deviation for the data of this resultant image were calculated. Therefore, for each nominal pressure, this procedure resulted in five sets of six data files, where each set contained resultant images consisting of the same number (one, two, three, four or five) of individual stain images (for a total of 30 data files at each nominal pressure).

For each population of six resultant images (i.e., at a given nominal pressure and number of combined stains) the overall mean pixel value,  $M_0$ , was calculated as the mean of the six individual mean pixel values; similarly, an overall standard deviation for the population,  $S_p$ , was calculated using the method of 'pooled variance'.<sup>8</sup> The pixel values given by  $M_0 \pm S_p$  were used to calculate the characteristic pressure range,  $R_p$ , for the population;<sup>6</sup> these pressure intervals were subsequently used to determine valid pressure intervals for each number of combined stain images (one to five).<sup>6</sup>

## RESULTS

Figure 3 shows the fifth-order calibration curve produced from the 12 standard calibration stains. Figures 4 and 5 show the overall standard deviation for the population ( $S_p$ ) and the pressure range ( $R_p$ ) calculated from  $M_0 \pm S_p$ , respectively, against the number of constituent stain images ( $N$ ). Table 1 shows the sug-

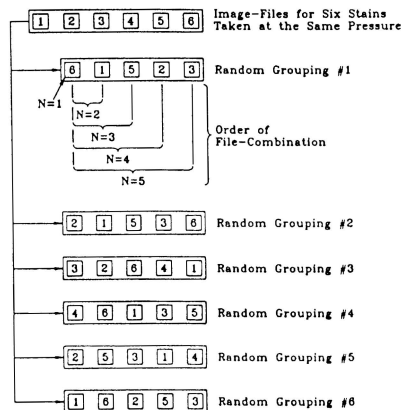


Fig. 2—Image-file selection for the production of resultant-image files from  $N$  constituent images

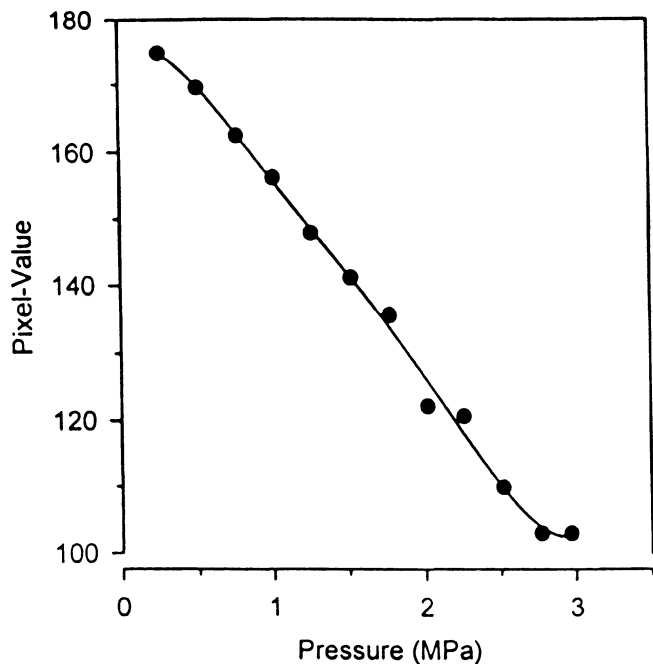


Fig. 3—Fifth-order polynomial curve-fit for twelve standard calibration stains, using superlow Fuji film at 25°C and 45% relative humidity

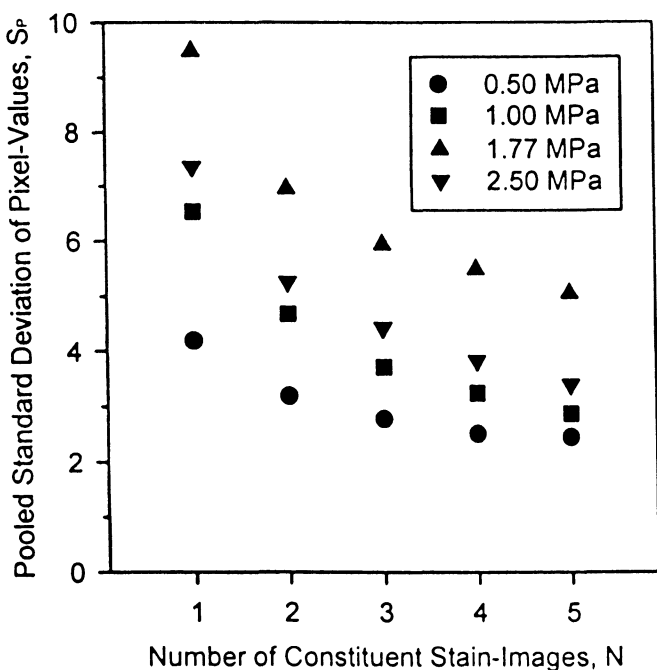


Fig. 4—Pooled standard deviation of pixel-values ( $S_p$ ) against number of constituent stain-images ( $N$ ) for stains taken at 0.5, 1.0, 1.77 and 2.5 MPa applied pressure

gested pressure intervals ( $I_1 - I_8$ ) for each value of  $N$ , as determined from the values of  $R_p$ .

## DISCUSSION

As expected, combining stain images results in a progressive reduction in  $S_p$ , and hence  $R_p$  (Figs. 4 and 5); surprisingly, the pressure intervals determined from these results (Table 1) suggest a simple (and convenient) general relationship whereby each additional stain image forming the resultant image will provide an additional valid pressure interval. It should be noted that while

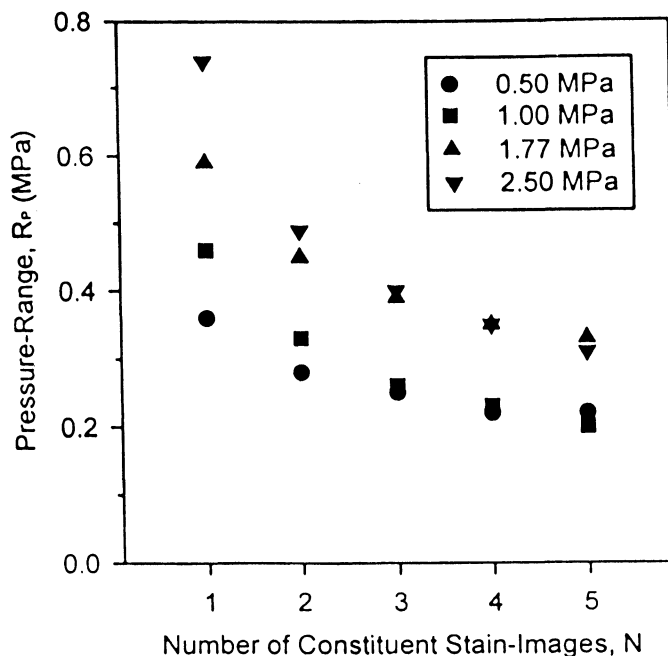


Fig. 5—Characteristic pressure-range ( $R_p$ ) against number of constituent stain-images ( $N$ ) for stains taken at 0.5, 1.0, 1.77 and 2.5 MPa applied pressure

$S_p$  is greater at 1.77 MPa than at 2.5 MPa (Fig. 4), in some cases  $R_p$  has a higher value at 2.5 MPa (Fig. 5). This seemingly unusual result is due to the decreasing gradient of the calibration curve as the stain response approaches saturation, and the corresponding pixel value approaches a constant (Fig. 3); hence, smaller changes in pixel value will represent larger changes in pressure at this end of the calibration curve.

The optical density of Fuji film stains has been shown to be dependent on the temperature and humidity at which the stains are produced.<sup>1,2</sup> The stains used for this work were obtained at a mean ( $\pm$ SD) temperature of  $25.4 \pm 0.2^\circ\text{C}$  and a mean ( $\pm$ SD) relative humidity of  $45.3 \pm 2.6$  percent; further analyses are required to assess the influence of these factors on image-addition characteristics. Similarly, these results were obtained using super-low grade Fuji film and additional experiments are required to assess the effect of this procedure on stain-images from the remaining film-grades (ultra-super-low, low, medium and high); however, due to the similar stain-forming mechanism on each film-grade, similar image-addition characteristics would be expected.

Table 1 shows that, for example, the combination of five stain images provides eight pressure intervals for a one-pixel-square ( $0.1\text{-mm-wide} \times 0.08\text{-mm-high}$ ) sample-area; this pressure-resolution is equivalent to that possible from a single stain image when a  $2\text{-mm-square}$  sample-area is employed.<sup>6</sup> Therefore, the image-addition technique provides a significant improvement in the spatial- and pressure-resolutions of subsequent pressure maps; however, this approach relies on the correct positional registration of stain images,<sup>9</sup> which may lead to practical difficulties. To achieve this requirement, each stain can be placed at the same position under the video camera (or on the scanning device); alternatively, the associated image-processing software can be used to align each captured stain image as required. In either case, some form of (accurate) 'indexing' method is necessary to identify the position and alignment of the stain, thereby allowing accurate registration of each stain. The use of shape-recognition algorithms may be impractical; the granular nature of Fuji film

TABLE 1—SUGGESTED PRESSURE-INTERVALS, I (MPa), FOR THE ADDITION OF N STAIN-IMAGES WITH "SUPER LOW" FUJI FILM

N	I <sub>1</sub>	I <sub>2</sub>	I <sub>3</sub>	I <sub>4</sub>	I <sub>5</sub>	I <sub>6</sub>	I <sub>7</sub>	I <sub>8</sub>
1	0.5-0.8	0.8-1.2	1.2-1.8	1.8-2.5	—	—	—	—
2	0.5-0.8	0.8-1.1	1.1-1.5	1.5-2.0	2.0-2.5	—	—	—
3	0.5-0.75	0.75-1.0	1.0-1.3	1.3-1.7	1.7-2.1	2.1-2.5	—	—
4	0.5-0.7	0.7-1.0	1.0-1.25	1.25-1.5	1.5-1.8	1.8-2.1	2.1-2.5	—
5	0.5-0.7	0.7-0.9	0.9-1.1	1.1-1.3	1.3-1.6	1.6-1.9	1.9-2.2	2.2-2.5

stains can result in difficulties when attempting to define the outline of any particular stain to the accuracy required.<sup>2</sup> A more realistic approach is to place a series of index marks on the film during loading, such that the film's position (and hence that of the subsequent stain) is defined relative to the interface within which it is being loaded; these marks should be as small as possible (ideally, equivalent to one pixel on the stain image), for accurate determination of their positions. Index marks can be created on Fuji film placed within a human or animal articulating joint via holes drilled through one of the bones forming the joint; during loading, a wire or needle is pushed through each hole such that a small pressure stain is produced on the film.<sup>12</sup> These holes are arranged such that the resulting index marks are away from the contact area and, therefore, do not interfere with the subsequent interface pressure data. Alternatively, the outline of one of the contacting surfaces may be traced onto the Fuji film (using a sharp indenter), during loading;<sup>2</sup> this method will only be valid if there is little gap between the surfaces at the periphery, thereby allowing accurate placement of the indenter.

Clearly, there are many potential solutions (and problems) associated with the practical addition of Fuji film stain-images; the appropriate solution will be largely dependent on the characteristics of the interface under investigation and the facilities available on the image-processing software which is being used.

## CONCLUSION

Image addition is a useful tool for determining interface pressures in situations demanding greater spatial and pressure resolution than those resolutions possible from the analysis of a single stain image; such interfaces include those consisting of a small contact area, or those experiencing high pressure gradients.

## ACKNOWLEDGMENTS

This work was funded by the Medical Research Council of Canada (grant # MA-11578) and the Arthritis Society of Canada (grant # 93070).

## REFERENCES

1. Liggins, A.B., Stranart, J.C.E., Finlay, J.B. and Rorabeck, C.H. "Calibration and Manipulation of Data from Fuji Pressure-sensitive Film," *Experimental Mechanics: Technology Transfer Between High Tech Engineering and Biomechanics*, ed. E.G. Little, Elsevier Science Publishers, Amsterdam, 61-70 (1992).
2. Liggins, A.B. and Finlay, J.B. "Recording Contact Areas and Pressures in Joint Interfaces," *Experimental Mechanics: Technology Transfer Between High Tech Engineering and Biomechanics*, ed. E.G. Little, Elsevier Science Publishers, Amsterdam, 71-88 (1992).
3. Brown, T.D., Pope, D.F., Hale, J.E., Buckwater, J.A. and Brand, R.A. "Effects of Osteochondral Defect Size on Cartilage Contact Stress," *J. Orthop. Res.* 9 (4), 559-567 (1991).
4. Hehne, H.J., Haberland, H., Hultsch, W. and Jantz, W. "Measurements of Two Dimensional Pressure Distributions and Contact Areas of a Joint Using a Pressure Sensitive Foil," *Biomechanics: Principles and Applications*, eds. R. Huiskes, D.H. Van Campen and J.R. De Wijn, Martinus Nijhoff, The Hague, 197-203 (1982).
5. Wagner, U.A., Sangeorzan, B.J., Harrington, R.M. and Tencer, A.F. "Contact Characteristics of the Subtalar Joint: Load Distribution Between the Anterior and Posterior Facets," *J. Orthop. Res.* 10 (4), 535-543 (1992).

6. Liggins, A.B., Hardie, W.R. and Finlay, J.B., "The Spatial and Pressure Resolution of Fuji Pressure-sensitive Film," *EXPERIMENTAL MECHANICS*, IN PRESS.

7. Hale, J.E. and Brown, T.D., "Contact Stress Gradient Detection Limits of Pressensor Film," *J. Biomechanical Eng.*, 114 (3), 352-357 (1992).

8. Wonnacott, T.H. and Wonnacott, R.J., *Introductory Statistics*, John Wiley and Sons, Toronto, 5th ed., 266 (1990).

9. Gonzalez, R.C. and Woods, R.E., "Image Enhancement," *Digital Image Processing*, Addison-Wesley Publishing Co., Reading, MA, 187-188 (1992).

10. Liggins, A.B., Surry, K. and Finlay, J.B., "Sealing Fuji Prescale Pressure-sensitive Film for Protection Against Fluid Damage: The Effect on its Response," *Strain*, IN PRESS.

11. Liggins, A.B., Hardie, W.R. and Finlay, J.B., "Sterilization of Fuji Pressure-sensitive Film," *Med. Eng. Phys.*, 16 (6), 496-500 (1994).

12. Marder, R.A., Swanson, T.V., Sharkey, N.A. and Duwelius, P.J., "Effects of Partial Patellectomy and Reattachment of the Patellar Tendon on Patellofemoral Contact Areas and Pressures," *J. Bone and Joint Surg.* 75A (1), 35-45 (1993).

## Orthogonal 2-Dimensional Holographic Gratings

Specially designed and manufactured, our gratings feature high diffraction efficiency, low noise, and excellent orthogonality with various frequencies. The gratings with low expansion at high temperatures have superb tolerance and are easy to separate in the process of specimen grating replications.

Leading Technologies, working in conjunction with experts from universities, research institutes, and industries in the development and manufacturing process, has been providing quality gratings and excellent services to customers worldwide since 1993, and is the largest supplier of the gratings for moiré interferometry applications. A grating replication kit and high precision vices for specimen preparations are also available.

Please feel free to contact us (Emails are encouraged to expedite processing) or visit our Web site for the latest product specifications, pricing, and ordering information.

### Leading Technologies

Web Site: <http://www.tir.com/~LeadingT>

E-mail: [leadingt@tir.com](mailto:leadingt@tir.com)

Fax: 313-454-7118

Phone: 313-454-6575

Address: 46148 Registry Dr., Canton Michigan 48187, USA